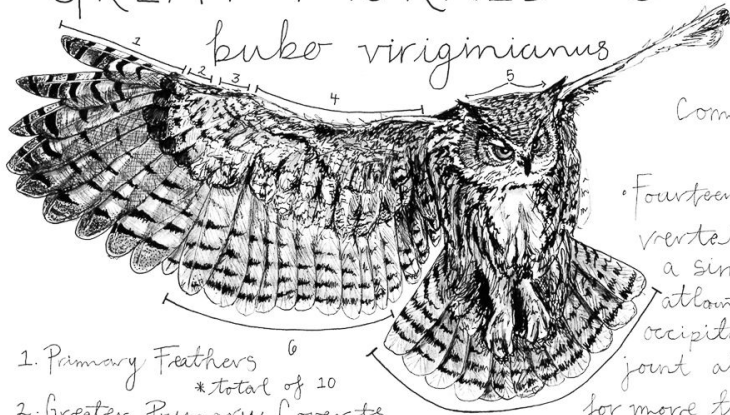
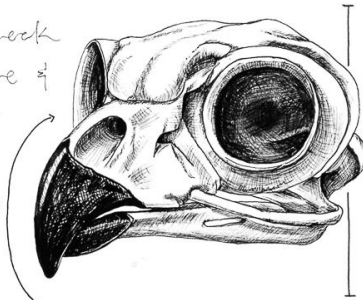


GREAT HORNED OWL

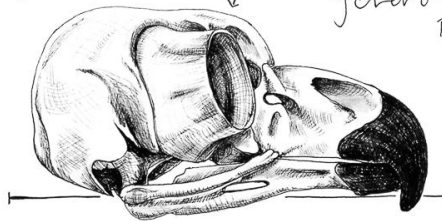


• Eyes are elongated & tube-shaped, making them completely immobile.

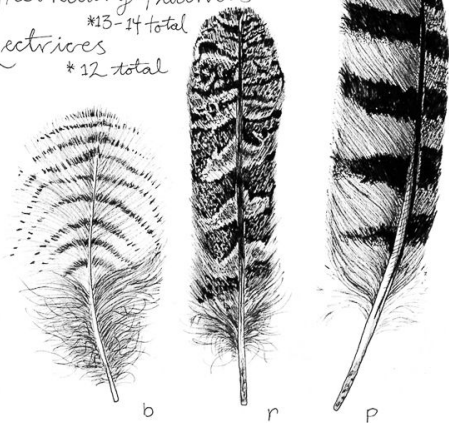
• Fourteen neck vertebrae & a single atlanto-occipital joint allows for more than 180 degrees of neck rotation.



Gherotic Riny



1. Primary Feathers ⁶
*total of 20
2. Greater Primary Coverts
3. Median Coverts
4. Lesser Coverts
5. Ear tufts
6. Secondary Feathers
*13-14 total
7. Rectrices
*12 total



IDENTIFICATION

- Mottled gray brown w/ reddish brown faces.
- White patch on throat.
- Yellow eyes & dark ear tufts.
- LENGTH: 18.1 - 24.8 in WINGSPAN: 39.8 - 57.1 in

Brittany Finch '23

Brittany Finch, *GH Owl SJ Print (limited edition)*, 2023
print, 13 x 13 in.
FINC-0009, •